

Contents

- Safety Notes**2
- 1. Getting Acquainted**3
 - United States Postal Service Guidelines
 - Parts of the Postage Meter
 - The Meter Stamp
 - Keypad Functions
 - Locating the Meter
 - POSTAGE BY PHONE®
- 2. Using the Meter**9
 - Printing Postage
 - Printing Ads
 - Installing Custom Ads
 - The Refill Process - Adding Postage
 - Using the Lock
- 3. Setup Options**23
 - Setting the Date
 - Setting the Time
 - Adjusting the Display Contrast
 - Changing the Pitney Bowes Data Center Phone Number
 - Activating New Meters
- 4. Ink Maintenance**31
 - Refreshing the Printer
 - Replacing the Ink Cartridge
- 5. Troubleshooting**39
- 6. SUPPLIES**43
 - Glossary45
 - Energy Star46
 - Specifications47
 - FCC Notes48
 - Industry Canada49
 - Index51

Safety Notes

Follow the normal safety precautions for office equipment when using this postage meter.

- Use only the AC adapter/power supply included with this postage meter.
- To protect against electric shock, plug the AC adapter into a properly grounded wall outlet only.
- The wall outlet should be near the postage meter and easily accessible.
- Do not remove the ground pin from the AC adapter and plug.
- Avoid using wall outlets controlled by wall switches or shared with other equipment.
- Do not route the AC adapter cable over sharp edges or trap it between furniture.
- Do not remove covers; if the postage meter has been dropped or has otherwise had the enclosure stressed in any way, call Pitney Bowes.
- Do not place lighted candles, cigarettes, cigars, etc., on the postage meter.
- Use only United States Postal Service-approved, Pitney Bowes ink cartridges.
- Keep fingers, long hair, jewelry and loose clothing away from moving part at all times.
- Read all instructions before you attempt to operate the meter.
- Use the equipment only for its intended purpose.

This postage meter connects directly to telephone lines, therefore, adherence to the following safety precautions is recommended:

- Never install telephone wiring during a lightning storm.
- Never install telephone jacks in wet locations unless the jack is specifically designed for wet locations.
- Never touch uninsulated telephone wires or terminals unless the telephone line has been disconnected at the network interface.
- Use caution when installing or modifying telephone lines.
- Avoid using a telephone or equipment that connects to a telephone line during an electrical storm; there may be a remote risk of electrical shock from lightning.
- Do not use the telephone or equipment connected to the telephone line in the vicinity of a gas leak.

1. Getting Acquainted

United States Postal Service Guidelines	4
Parts of the Postage Meter	5
The Meter Stamp	5
Keypad Functions	6
Locating the Meter	7
POSTAGE BY PHONE®	8

United States Postal Service Guidelines

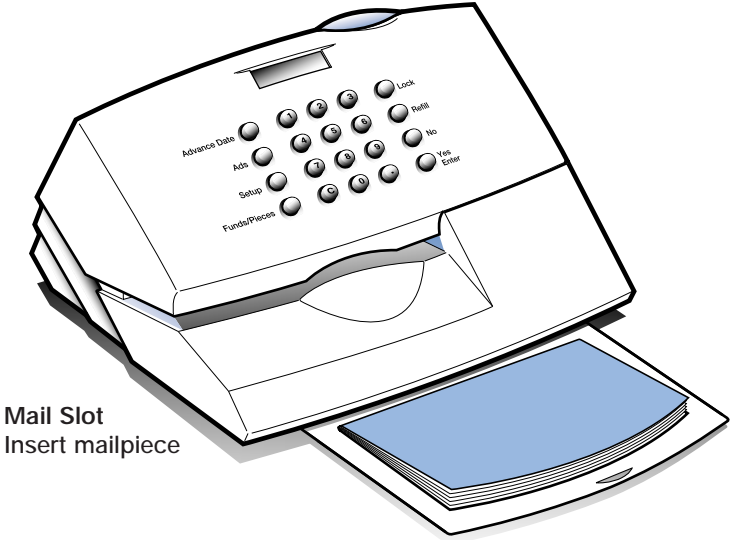


Since your meter is licensed by the United States Postal Service (USPS) you must follow a few basic rules:

- Mail must have the correct date and postage amount in the meter stamp.
- Metered mail must bear the ZIP code location of the Post Office where the mail is being deposited.
- If you move to another ZIP code location, the USPS requires you to update the ZIP code on your postage meter. You can do this by calling Pitney Bowes.
- The USPS requires you to report the amount of postage used at 90- day intervals. This is done automatically with each postage refill. If more than 90 days elapses between refills, the meter will warn that an inspection is due. If 120 days elapses, the inspection must be performed in order for the meter to print postage. See the Troubleshooting section for instructions on clearing the inspection messages.

Parts of the Meter

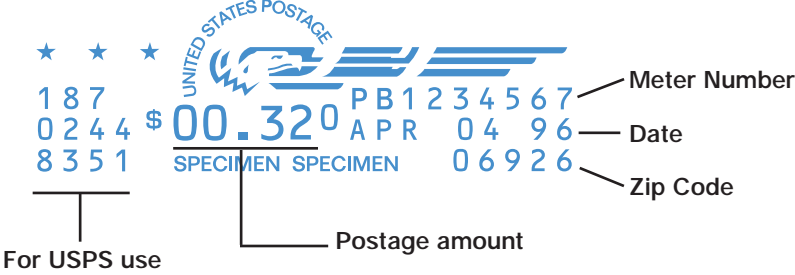
Card Slot
For Ad Cards



Mail Slot
Insert mailpiece

Quick Reference Guide
Covers most procedures

The Meter Stamp



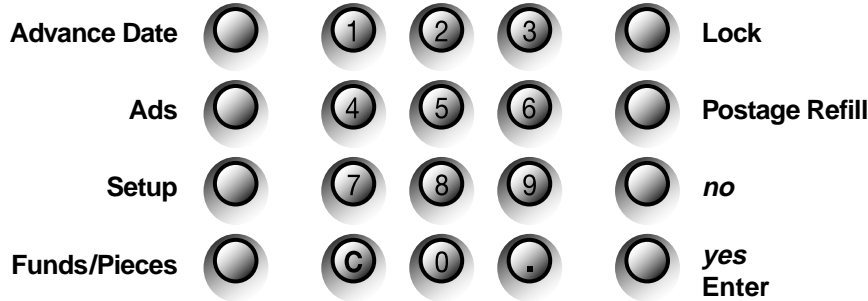
Keypad Functions

Advance Date
Temporarily set the date ahead

Lock
Prevents unauthorized use of funds

Ads
Select an ad to print

Postage Refill
Add funds via POSTAGE BY PHONE®



Setup
Turn Date Off/On
Change Date
Change Time
Install Custom Artwork
Enable/Disable Lock
Change Contrast
Change Phone Number
Change Account Number

Funds Pieces
\$ Available
\$ Used
Pieces Printed

Use Printer Functions

- Install Ink
- Maintenance
- Printer Test

Locating the Meter



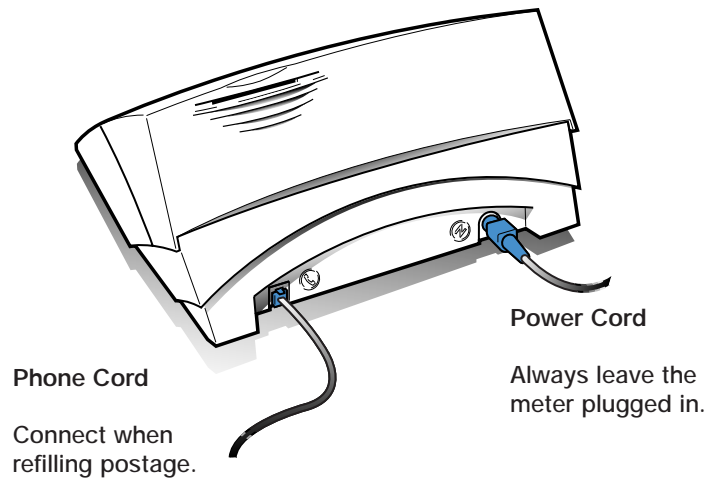
The meter must be plugged in to operate. It is on when it is plugged in; there is no on/off switch.

To keep your meter printing clearly, choose a permanent location for your meter where it will be continually supplied with power. This will ensure the printer maintenance will be performed on a regular basis.

Likewise, always keep fresh batteries in the meter in case of a power failure or the meter is temporarily unplugged. Fresh batteries store the date and keep printer maintenance on schedule.

After 10 minutes of inactivity, the meter enters sleep mode and the display is blank. Press any key to wake it up.

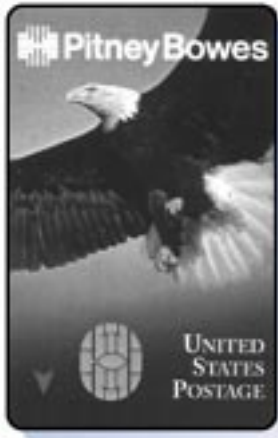
! Do not tip the meter more than 45 degrees in any direction or stand it on end; ink may leak from the ink cartridge.



POSTAGE BY PHONE®



Step 1: Add funds to POSTAGE BY PHONE® account



Make the check payable to US Postal Service and send with coupon to CMRS-PB center (see below). Allow 5 business days for processing.

Step 2: Transfer postage to meter

Make the check payable to US Postal Service and send with coupon to CMRS-PB center (see below). Allow 5 business days for processing.

Making payments to your account

Regular Mail Address
CMRS-PB
PO BOX 7247-0166
PHILADELPHIA PA 19170-1166

Overnight Mail Address
CITIBANK LOCKBOX OPERATIONS
ATTN: LOCKBOX #0166
1615 BRETT ROAD
NEW CASTLE DE 19720

CMRS-PBP
PO BOX 0566
CAROL STREAM IL 60132-0566

CMRS-PBP
PO BOX 504766
THE LAKES NV 88905-4766

2. Using the Meter

Printing Postage	10
Checking the Date	10
Checking Postage Available	11
Determining the Postage Amount	11
Setting the Postage Value	12
Printing the Meter Stamp	12
Using Postage Tape Sheets	13
Turning Off Date Printing	14
Printing Ads	15
Installing Custom Ads	16
The Refill Process	17
Buying Postage	17
Adding Postage	18
Checking Your Account Balance	19
Using the Lock	20
Turning On the Lock Function	20
Turning Off the Lock Function	21
Locking the Meter Funds	22
Unlocking the Meter Funds	22

Printing Postage



Step 1: Checking the Date

Since you must mail your envelope on the day that is printed in the meter stamp, be sure to check the date on the display before you print the postage.

If you plan to mail the envelope after the postal carrier has picked up the mail, set the date for the next day using the advance date function.

To temporarily advance the date

- Press the **Advance Date** key. The current date displays.
- Press the **Advance Date** key again to advance the date.
- Press **Enter** to set the date and return to ready mode.

! Always restore the current date when finished. If you do not, the date will remain inaccurate.

To reset to the meter date

- Press the **Advance Date** key.
- Press the **Clear (C)** key. The meter date is displayed.
- Press the **Enter** key.

To change the meter date, use the *Change Date* function under *Setup Options*.

Step 2: Checking Postage Available



Before printing postage, you may want to check how much postage is left in the meter.

- Press **Funds/Pieces**. The amount of postage available displays.
- Press the **Clear (C)** to return to ready mode.

Additional key presses of the Funds/Pieces key displays the total amount of postage spent and the total number of pieces printed.

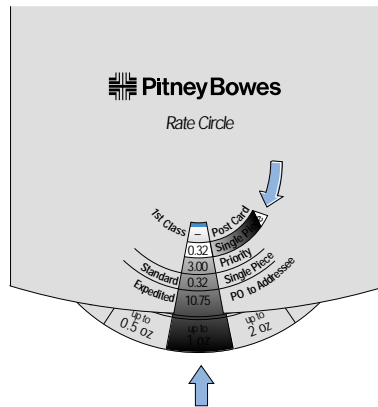
Step 3: Determining the Postage Amount



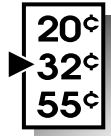
One of the advantages of using a postage meter is that you can print the exact amount of postage you need.

- ▶ Using the postal scale, weigh the mail.
- ▶ Using the Rate Circle which pulls out from under the optional scale, look up the postage amount for the weight and class of your mailpiece.

If there is a change in postage rates, contact Pitney Bowes to order a new postage rate chart.



E700/E702 METERS



Step 4: Setting the Postage value

- Key in a postage amount and press **Enter**.

Two decimal places are assumed; you need not key in the decimal point. For example, if you want \$0.32, key in **3 2 Enter**.

High Value

You can enter any amount up to \$99.999. If you enter a postage value of \$1.00 or more, the display warns that it is a high value. You must press **yes** to confirm the large amount.

Advanced Use: Setting Fractional Postage

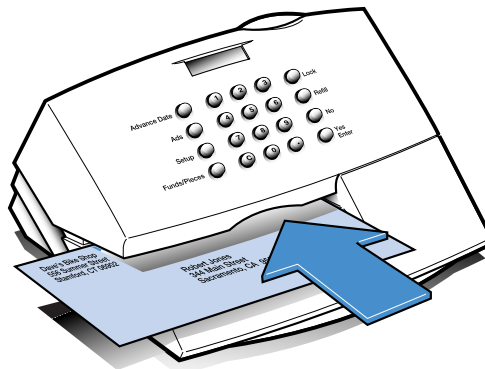
The United States Postal Service offers discounts to mailers that comply with certain regulations. Discounted rates may require a fractional postage value such as \$0.165. In these cases, you must press the decimal key in order to enter the fractional amount. For example, to set \$0.165 press **. 1 6 5 Enter**.



Step 5: Printing the Meter Stamp

- ▶ Hold the envelope by the bottom.
- ▶ Insert it face up into the meter by aligning it with the right wall and sliding it straight back until the meter displays **PLEASE WAIT**.

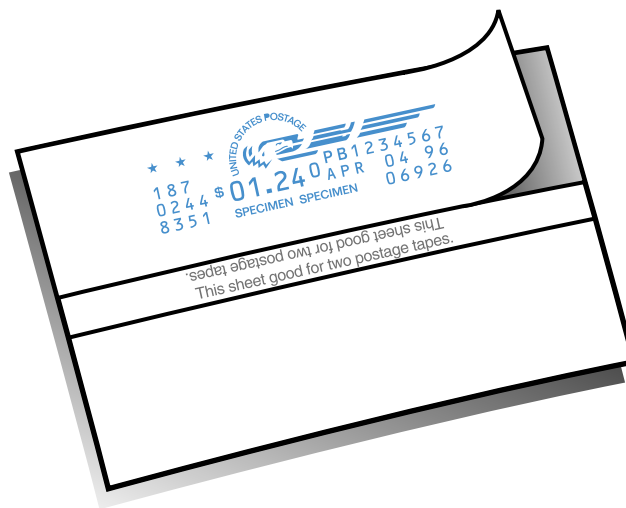
The postage amount remains set until you change it.



Using Postage Tape Sheets for Thick Envelopes and Packages

If your mailpiece is too thick for the postage meter or difficult to print on, such as a red envelope, print the postage on a tape sheet.

- ▶ Print the postage on a postage tape sheet.
- ▶ Peel the tape from the backing sheet and affix to the mailpiece or package.



- ! If the meter stamp smears, the envelope is too thick for the meter. Use a postage tape sheet to avoid damaging the printer.

Do not place objects such as paper clips in the meter stamp section of the envelope. The raised area may interfere with the printhead.

Advanced Use:

Turning OFF Date Printing



Turn Date Off is an option which allows you to prepay the postage on a return envelope. In this instance, the date is not shown in the meter stamp since you do not know when the reply will be mailed.

Consult the United States Postal Service Domestic Mailing Manual, your postal representative, or the local postmaster for complete details on the latest information and when to use this feature.

To turn OFF date printing

- Press **Setup** repeatedly until the **TURN DATE OFF?** prompt displays.
- Press **Clear (C)** to return to ready mode.

! Remember to turn the date back on when you are finishing with the reply mail.

To turn ON date printing

- Press **Setup** repeatedly until the **TURN DATE OFF?** prompt displays; press **yes**.
- Press **Clear (C)** to return to ready mode.

Printing Ads



You can select an ad slogan to print to the left of the meter stamp. There are eight ads available; you may also purchase additional standard and custom ads. Custom ads display your personal message, logo, or other design.

To select an ad

- Press the **Ads** key. The currently selected ad is displayed. Continue pressing the **Ads** key until you find the ad you want.
- Press **Enter**.

To turn ad printing off

- Press the **Ads** key. Continue pressing the **Ads** key until **NONE** displays.
- Press **Enter**.

These ads are included with your meter.



RECYCLE



IT'S SERVICE



FRIENDS DON'T



UNITED WAY



FLAG

First Class

FIRST CLASS



HOLIDAY GREETING

Please Open Immediately

OPEN IMMEDIATELY

Installing Custom Ads



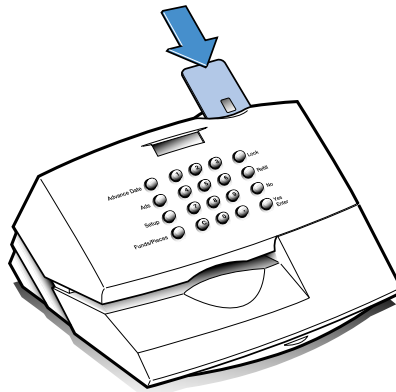
You may purchase ad cards from Pitney Bowes containing customized messages you design or one of the many other standard ads available. For more information on ordering custom ads, see the catalogue included with your meter, or call Pitney Bowes for a copy.



After installing a new ad in your meter, it remains available until you replace it with another new ad. Save custom ad cards in case you ever need to load the ad to the meter again.

To install a custom ad

- Press **Setup** repeatedly until the **INSTALL NEW AD?** displays.
- Press **yes**.
 - ▶ At the prompt, insert the ad card face up in the slot with the gold, oval shaped microprocessor at the bottom as shown. The prompt **INSTALL OK REMOVE CARD** card displays when the process is complete.
 - ▶ Remove the ad card.
- Press the **Clear (C)** key to return to ready mode.



The Refill Process



Buying Postage

The heart of the POSTAGE BY PHONE system is a central computer located at the Pitney Bowes Data Center. The computer is able to communicate with your meter during the refill process through the meter's built-in modem.

The modem requires an analog phone line such as a fax line, or residential phone line. If you have a commercial phone system, check that it uses an analog line. If it does not, an analog phone line will have to be installed or you can share use of an existing fax machine line. Simply unplug the fax machine line and plug it into the meter when buying postage. Common telephone jack splitters can also be used to share one analog line.

A analog telephone line can usually be identified as follows:

- ▶ A change in tone pitch when buttons are pressed.
- ▶ Data label/inscription on telephone set has FCC "Ringer Equivalence Number".
- ▶ The telephone line is connected to your facsimile.



If you do not know whether your phone line is digital or analog line, consult your building facilities representative or the phone manufacturer.

Addresses for making payments to your POSTAGE BY PHONE account appear on page 8.

Adding Postage



! Check that the phone cord is connected to the back of the meter and the wall telephone jack.

- Press the **Refill** key.
- Key in the refill amount in whole dollars. The maximum postage the E700 meter funds can hold is \$1000. The maximum postage the E702 meter funds can hold is \$100.
- Press **Enter**.

The meter dials the **POSTAGE BY PHONE Data Center** and displays a series of messages telling you the progress of your refill.

- ▶ At the **INSERT FORM FOR RECEIPT** prompt, insert a postage tape sheet or piece of paper. Wait for the meter to print your receipt. When finished, the display returns to ready mode.

Date: 02 / 14 / 97	Account #: 1 2 3 4 5 6 7 8
Refills Left: 253	Meter #: 7 6 5 4 3 2 1
Refill Amount: \$ 1 0 0	
Account Balance: \$ 4 9 . 5 0	

Print a receipt of the refill.

Checking the Postage Available

Checking the postage available in the meter

Use the Funds/Pieces key to display the amount of postage in the meter. For detailed instructions, see Step 2 of *Printing Postage* on page 11.

Checking your account balance at the Pitney Bowes Data Center

When you deposit money with the POSTAGE BY PHONE Data Center, you may choose not to refill your meter with the entire amount on deposit. You can easily check your balance on hand by performing the following steps.

- Press the **Refill** key.
- At the **REFILL AMOUNT** prompt, enter 0 (zero) and press **Enter**. The meter dials the POSTAGE BY PHONE Data Center, and your account balance displays.
- Press the **Clear (C)** to return to ready mode.

If you are a Purchase PowerSM participant, the account balance displayed is the total of any pre-paid funds in your POSTAGE BY PHONE account plus the available credit remaining on your Purchase Power account.

Using the Lock



Use the lock function to control access to the meter.

Turning ON the lock function

When you receive your meter, the lock function is off.

- Press **Setup** repeatedly until the **CHANGE LOCK CODE?** prompt appears.
- Press **yes**.
- Choose the four digit code you will remember. Key in the number and press **Enter**.
- Press the **Clear (C)** to return to ready mode.



If you forget your lock code, call Pitney Bowes.

Turning OFF the lock function



Setting the lock code to 0000 will turn off the lock function.

- Press **Setup** repeatedly until the **CHANGE LOCK CODE?** prompt appears.
- Press **yes**.
- At the **ENTER OLD CODE?** prompt, key in the current lock code.
- Press **Enter**.
- At the **ENTER NEW CODE?** prompt, key in **0000**.
- Press **Enter**.
- Press the **Clear (C)** to return to ready mode.



Changing the lock code

Follow the directions above for turning off the lock function except enter your new code in place of the disable code 0000.

Locking the meter funds



- Press **Lock**. The message **METER LOCKED** displays for two seconds. Then the message **ENTER CODE TO UNLOCK** displays.

The meter funds cannot be used without entering the lock code.



Unlocking the meter funds

- At the **ENTER LOCK CODE** key in the lock code. After verifying the code, the meter returns to ready mode.

3. Setup Options

Setting the Date	24
Setting the Time	25
Adjusting the Display Contrast	26
Changing the Pitney Bowes Data Center Phone Number	27
Activating New Meters	28
Changing the Postage Account Number	29
Performing the Initial Inspection	29

Setting the Date



This feature is used primarily for setting the date on a new meter or to restore the date after changing the batteries.



To temporarily change the date, use the [Advance Date](#) key as described on page 10 in the section *Checking the Date*.

- Press [Setup](#) repeatedly until the **CHANGE DATE?** prompt appears.
- Press [yes](#).
- Key in the date in place of MMDDYY (month/day/year) on the display. For example, February 14, 1996 is entered as **0 2 1 4 9 6**.
- Press [Enter](#).
- Press the **Clear (C)** to return to ready mode.
-

The date you set appears on the ready mode display.

Setting the Time



AutoDating

The meter clock allows the AutoDating feature to advance the date at midnight each day.

- Press **Setup** repeatedly until the **CHANGE DATE?** prompt appears.
- Press **yes**.
- Key in the date in place of HH:MM (hour:minute) on the display; press **Enter**. After you enter the time, the meter will prompt AM or PM. For example, 9:23 AM is entered **0 9 2 3** **Enter**; answer **yes** or **no** to a.m. or p.m.
- Press the **Clear (C)** to return to ready mode.

Adjusting the Display Contrast



There are four levels of contrast for the display. The best contrast depends on where your eye is relative to the display and what sources of light are in the room.

- ▶ Position the meter where you will use it.
 - ▶ Position yourself where you will be when using the meter. (if you will be seated, sit down.)
-
- Press **Setup** repeatedly until the **CHANGE DISPLAY CONTRAST** prompt appears.
 - Press **yes**.
 - Press **1, 2, 3, 4**. As you do so, the display shows the change in contrast.
 - Once you have chosen your preference, press **Enter**.
 - Press **Clear(C)** to return to ready mode.

Changing the Pitney Bowes Data Center Phone Number



The Pitney Bowes Data Center toll-free phone number is 1-800-848-3764. It is automatically dialed by the meter when a refill is being performed.



If a dialing prefix (such as 9 for an outside line) is required, the phone number setting must be changed.

It is recommended that you include a pause between the dialing prefix and the number.

To add a pause in the dialing, press the decimal key (.).

To add an “asterisk” (*) in the dialing, press the Refill key.

To add a “pound sign” (#) in the dialing, press the no key.

- Press **Setup** repeatedly until `CHG PB PHONE#?` the prompt appears.
- Press **yes**.
- Key in the prefix plus the Data Center phone number. For example, to add a prefix of 9, key in **9. 1 800 848 3764 Enter**.
- Press **Clear (C)** to return to ready mode.

Activating New Meters

Four steps must be performed to activate a meter:

- (1) Set the date
- (2) Set the time
- (3) an account number must be installed;
- (4) an inspection, using the POSTAGE BY PHONE refill process, must be done.

We recommend that you record the account number below for future reference.

POSTAGE BY PHONE Account Number _____

Step 1: Set the Date

- Press **Setup** repeatedly until the **CHANGE DATE?** prompt appears.
- Press **yes**.
- Key in the date in place of MMDDYY (month/day/year) on the display. For example, February 14, 1996 is entered as **0 2 1 4 9 6**.
- Press **Enter**.

Step 2: Set the Time

- Press **Setup** repeatedly until the **CHANGE TIME?** prompt appears.
- Press **yes**.
- Key in the date in place of HH:MM (hour:minute) on the display; press **Enter**. After you enter the time, the meter will prompt AM or PM. For example, 9:23 AM is entered **0 9 2 3 Enter**; answer **yes** or **no** to a.m. or p.m.

Step 3: Changing the Postage Account Number

- At the **INSPECTION REQUIRED** prompt, press **Clear (C)**.
- Press Setup repeatedly until the prompt **CHANGE POSTAGE ACCOUNT #?** appears.
- Press **yes**.
- Key in the account number and press **Enter**.

Step 4: Performing the Initial Inspection

- At the **INSPECTION REQUIRED** prompt, press **Clear (C)**.
- Press Refill.
- Key in the amount of postage you want to out in the meter and press **Enter**.

The display will indicate the transaction's progress:
DIALING , CONNECTING ...

If the message **CANNOT REACH THE DATA CENTER** displays, try again. The line may just be busy. If the problem continues, see the section **Changing the Pitney Bowes Data Center Phone Number** on page 27 to verify that the meter is dialing the correct number.

- ▶ At the **INSERT FORM FOR RECEIPT** prompt, insert a postage tape sheet face up into the meter. **Save this receipt** for your records.

Print a receipt of the refill.

E700/E702 METERS

4. Ink Maintenance

Refreshing the Printer	32
Performing Maintenance	32
Repeat if Necessary	33
Replacing the Ink Cartridge	34

Refreshing the Printer



The meter performs automatic maintenance regularly to keep the print nozzles clear. Occasionally, however, you may find that the meter stamp is not complete. When this happens, you may need to refresh the printer nozzles using the **PERFORM MAINTENANCE** function, or you may need to replace the ink cartridge using the **INSTALL INK CARTRIDGE** function.



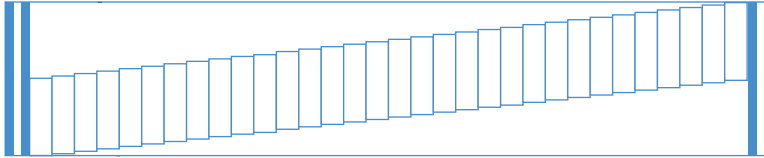
Step 1: Performing Maintenance

- Press **Setup**.
- Press **yes** at **USE PRINTER FUNCTIONS?** the prompt.
- Press **no** until the **PERFORM MAINTENANCE?** prompt appears.
- Press **yes**.

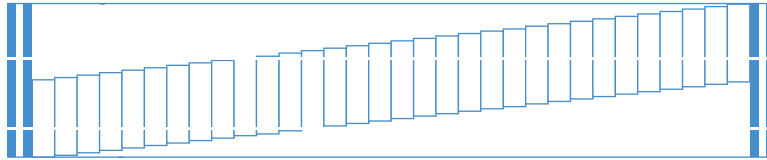
Wait while the printer goes through the maintenance process. This takes about 1 minute.

- ▶ At the **INSERT FORM FOR TEST** prompt, insert any blank envelope or postage tape sheet.
- ▶ Check the test print to be sure that all nozzles are printing.

If the test print is correct, press **Clear (C)** to return to ready mode.



Good Test print.



Bad test print. Notice missing lines.

Step 2: Repeat if Necessary

- If the test print still has blank lines in it, press yes to perform maintenance again.
- At the **INSERT FORM FOR TEST** prompt, insert another test sheet.
- Check the print test.

If more lines are missing, it is time to replace the ink cartridge. Follow the directions in *Step 3*.

If the same lines are missing, perform maintenance again as described in *Step 2*.

If after three tries, the test print is still not complete, call Pitney Bowes.

Step 3: Replacing the Ink Cartridge

Before replacing the ink cartridge, perform printer maintenance as described in step 1. Refreshing the printer may clear any clogged nozzles.

Take the following precautions to avoid damage to the print mechanism:

- Do not leave printhead without an ink cartridge in place; if the cartridge runs out of ink and you do not have another, leave the empty cartridge in place until you can replace it. This will prevent the printhead from drying out.
- Always use the **INSTALL INK CARTRIDGE?** function via the **Setup** key when replacing an ink cartridge.
- Never install a partially used ink cartridge; automatic maintenance is based on installing new cartridges.
- Do not refill used ink cartridges; these cartridges contain United States Postal Service-approved ink that is specially designed to work with your printer. Other inks will likely cause damage to your printer and cause your mail to be delayed in delivery or returned.

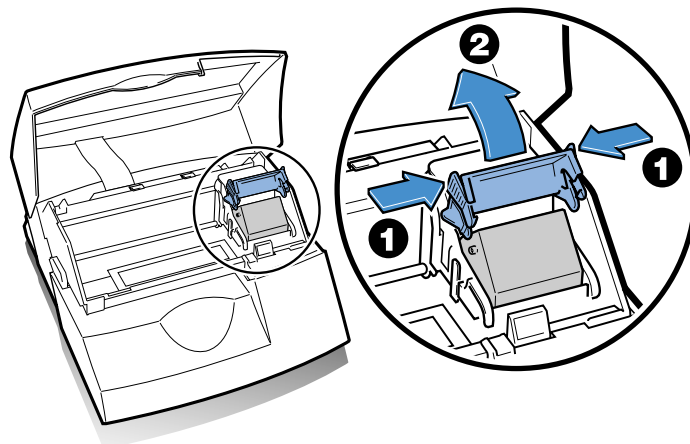
! If you do not have a new ink cartridge, leave the empty one in the meter to keep the nozzles from drying out.

To replace the ink cartridge

- Press **Setup**.
- Press **yes** at the **USE PRINTER FUNCTIONS?** prompt.
- Press **yes** at the **INSTALL INK CARTRIDGE?** prompt.

- ▶ At the **ADD INK - PRESS ENTER WHEN DONE** prompt, lift the meter cover.
- ▶ Squeeze the tabs on each side of the protective bar securing the ink cartridge and rotate the bar up and back.
- ▶ Remove the old ink cartridge and discard. Handle it carefully—there may be ink on the bottom of the cartridge.

procedure continues...



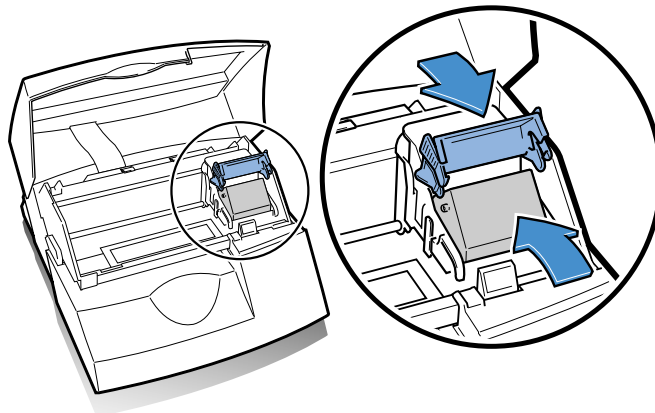
E700/E702 METERS

- ▶ On the new ink cartridge, remove the tape strip covering the ink and vent holes.



- ▶ Place the new ink cartridge on top of the printhead with the label facing out.
- ▶ Rotate the protective bar into place and press down on it gently until both tabs snap in place.
- ▶ Close the meter cover.

procedure continues...



- At the **INSTALL INK PRESS ENTER WHEN DONE** prompt, press **Enter**.
- At the **IMPORTANT - IS INK INSTALLED?** prompt, press **yes**.
- ▶ Wait while the printer goes through the ink replenishment process. This takes about a minute.
- ▶ At the **INSERT FORM FOR PRINT TEST** prompt, insert any blank envelope or postage tape sheet.
- ▶ Check the test print to be sure that all nozzles are printing.
- ▶ If the test print is correct, press **Clear (C)** to return to ready mode. If test print is not complete, press **yes** to perform maintenance. Follow the procedure described in previous section *Refreshing the Printer*.

E700/E702 METERS



5. Troubleshooting

The information below lists corrections to problems that might arise during use of your meter. If a problem persists, call Pitney Bowes.

Clearing errors

To clear most error conditions, press the Clear (C) key. If unsuccessful, unplug your meter, wait 30 seconds, and reconnect.

In rare cases, when power cycling does not clear the error, remove the batteries and unplug the meter. Reconnect power, install batteries and reset date and time.

Display difficult to read

Adjust display contrast using Setup key or move meter to another location.

Lines missing in meter stamp

Printer maintenance required. May be clogged nozzles or low ink. Perform printer maintenance up to three times. If more lines are out, change ink cartridge using **INSTALL INK CARTRIDGE** function. If problem persists, call Pitney Bowes.

No power

Check outlet and power supply connector pins (arrow facing up). Do not use an outlet controlled by a switch.

Meter stamp does not print

Printhead not primed with ink. Check that nozzle cap is removed and that tape on cartridge is removed.

Meter stamp is smudged

Envelope is contacting printhead during printing. Check that envelope does not exceed 5/16" thickness. Do not place objects, such as paper clips, in the meter stamp area.

Lock code unknown

Cannot remember lock code. Call Pitney Bowes.

A four-digit number displays.

Self test failed. Unplug meter, wait 30 seconds, reconnect. If the message does not clear, remove the batteries and unplug the meter. Reconnect power, install batteries, and reset date and time.

E700/E702 METERS

READY does not display

1. *ZIP code not installed or inspection required.* Press **Refill** and enter \$0.00 to allow Pitney Bowes to install your ZIP.
2. Out of ink. Use **INSTALL INK CARTRIDGE?** function to install a new ink cartridge.

ACCOUNT BALANCE LOW

You do not have enough money in your account at the Data Center to pay for the refill amount. Perform refill procedure for smaller amount or contact Pitney Bowes to add to your account.

CANNOT FIND ZIP - REFILL REQUIRED

No ZIP has been installed in the meter by the Data Center. Perform a refill to install the ZIP. Press **Refill**. If you do not want to add funds at this time, set the refill amount to \$0.00.

CANNOT REACH DATA CENTER

Data Center connection could not be made. Repeat call. It may have been a busy signal. If unsuccessful, check the Pitney Bowes Phone Number and any dialing prefix you may have added in the **CHG PB PHONE #** Setup Option.

CANNOT READ CARD

The card is inserted incorrectly. Remove card and reinsert with the gold circle face up and toward the bottom.

CONNECTION LOST-TRY AGAIN?

Data Center was disconnected before the refill transaction completed. Press **yes** to repeat the call.

DATA CENTER PHONE IS BUSY

A busy signal was detected. Repeat call. If unsuccessful, check the Pitney Bowes Phone Number and any dialing prefix you may have added in the **CHG PB PHONE #** Setup Option.

INCORRECT CODE

An incorrect lock code has been entered. Press **Clear (C)**; key in code again. If you cannot remember the correct code, call Pitney Bowes.

INSPECTION DUE-REFILL REQUIRED

No refill has been performed for 90 days. Press **Refill**. If you do not want to add funds at this time, set the refill amount to \$0.00.

INSPECTION REQUIRED-REFILL

No refill has been performed for 120 days. The refill procedure must be performed in order for the postage meter to print postage. Press **Refill**. If you do not want to add funds at this time, set the refill amount to \$0.00

LOW INK-ORDER CARTRIDGE SOON

Cartridge is low or out of ink. Replace cartridge using **INSTALL INK** printer function under **Setup** key. If message does not clear, see instructions on page 35.

METER ERROR: XXXX (any four digits)

Press **Clear (C)**. If unsuccessful, unplug the meter, wait 30 seconds, and reconnect. If the message does not clear, remove the batteries and unplug the meter. Reconnect power, install batteries, and reset date and time.

NO ADD FOUND - CHECK CARD

The card inserted does not contain an ad. Check that you inserted an ad card.

NO DIAL TONE

No dial tone is found. Check that the phone cord is connected to the postage meter and the wall outlet. If the line is connected, check that the phone line is an *analog* phone line.

NOT ENOUGH FUNDS

Insufficient funds in meter. Key in postage amount again. If funds are low, perform refill procedure.

POSTAGE VALUE EXCEEDS LIMIT

The postage amount entered is larger than the maximum amount the postage meter can print. Key in a lower postage amount.

PRINTER JAMMED - REMOVE PAPER

The printhead is jammed. Remove paper and press **Clear (C)**. If no paper present, check that the yellow printhead stop shipped in the meter has been removed.

REFILL TOO HIGH - MAX FUNDS LIMIT

Refill amount plus funds in meter exceeds maximum amount meter can hold. Press **Clear (C)**; enter a smaller postage amount.

Troubleshooting continues...

E700/E702 METERS

REFILL FAILED - CHECK ACCT#

Connection was made to Data Center but transaction could not take place. Check that the correct **POSTAGE BY PHONE** Account number is stored in the meter under Setup Options. If correct, try refill again.

REMOVE ENVELOPE

This displays if one of the following occurs:

1. *Printing is complete.*
2. **Enter** was not pressed when a new postage value was being set. Remove the envelope; press Enter; reinsert envelope to print postage.
3. *The meter woke up when an envelope was inserted.* Remove the envelope so the postage amount can be displayed before you print postage.

REPLACE BATTERIES

Batteries are weak or not detected. replace with new batteries. If batteries are new, check that they are inserted correctly with the positive(+) end to the right.

6. Supplies

Ordering Supplies

For E700 supplies call; 1-800-468-8454

Item	Order Number
Ink Cartridge	#769-0
Postage tape sheets, 50 pack	#612-9
Dust Cover	#621-9
Batteries (3 AAA)	#202-9
E-Z Seal® (4 oz. bottle)	#601-7
Custom art cards	

Replacing the Ink Cartridge

When replacing the ink cartridge, follow the *Ink Maintenance* instructions on page 32 to ensure that the ink from the new cartridge is pumped into the printhead.

Changing the Batteries



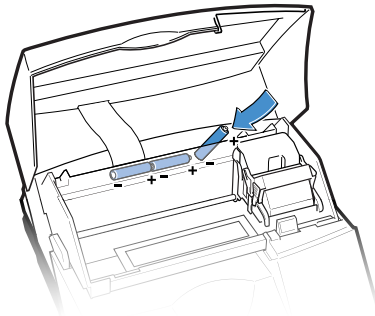
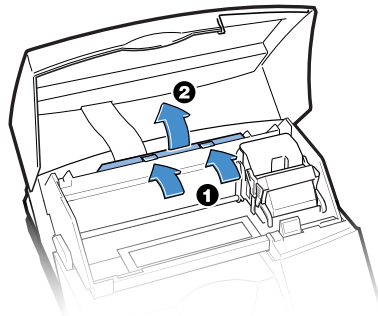
Always keep three fresh AAA batteries in the meter to ensure proper auto-maintenance is performed. Alkaline batteries are recommended.

Keep the meter plugged in while you change the batteries so the date setting is maintained.

- ▶ Lift the meter cover.
- ▶ Remove the battery cover, located near the printer cable, by lifting up on the two tabs.
- ▶ Remove old batteries by first removing the battery on the right. Then slide the other batteries to the right and lift them out.

Changing the Batteries continued...

- ▶ Install the new batteries with the plus (+) sign to the right.
- ▶ Ensure that the last battery is completely seated.
- ▶ Replace the battery cover.
- ▶ Close the meter cover.
- ▶ Reset the date and time, if necessary.



Glossary

Ad Card. A card that contains an advertising (ad) slogan that can be added to the standard ads.

Ad Slogan. Lets you convey your own special message alongside the meter stamp.

Inspection Due/Required. A regulation of the United States Postal Service (USPS) that requires meter users to contact the Pitney Bowes POSTAGE BY PHONE® Data Center periodically.

Lock Code. A four-digit personal identification number (PIN) you enter to allow access to meter funds.

Mailpiece. Any envelope, post card, package or meter tape.

Meter Serial Number. The USPS number found on the bottom of the meter.

Modem. The part of the machine that dials the POSTAGE BY PHONE® Data Center and transfers data via the phone line.

POSTAGE BY PHONE®. A service available through Pitney Bowes that allows customers to buy postage and check account status electronically over the phone. It also enables convenient postal inspection by phone.

Postage Tape Sheets. A strip of self-adhering paper on which you may print postage and apply to a mailpiece.

Ready Mode. The meter display that shows the date, the word READY, and the postage amount.

Refill. The process of adding funds to your meter using the Pitney Bowes POSTAGE BY PHONE® service.

Sleep Mode. The energy-saving feature of your meter that clears the display after 10 minutes of idle time. Pressing any key will wake up the display.

Energy Star



Pitney Bowes' desire to advise customers about the energy efficiency of our equipment not only includes the bottom line savings but also evaluating our equipment's impact on the environment. Office equipment is the fastest growing electricity load in the world.

The U.S. Environmental Protection Agency (EPA) promotes energy efficiency because electricity generation contributes to air pollution, including 35 percent of all U.S. emissions of carbon dioxide. It also accounts for 70 percent and 33 percent of all U.S. emissions of sulfur dioxides and nitrogen oxides, respectively. By using more energy efficient equipment like the new Pitney Bowes Model E700 Postage Meter, we can reduce this pollution, while saving money.

If there are no envelopes printed or no keys are pressed on the Operator Panel, for a designated period of time, the Auto Shut-off function will activate and the postage meter will enter an energy saving mode.

As an ENERGY STAR partner, Pitney Bowes Inc. has determined that the Model E700 meets the ENERGY STAR guidelines energy efficiency.

Specifications

Equipment

Power requirements: 120VAC, 60 Hz, 1.5A

Maximum imprint: \$99.999

Refill method: POSTAGE BY PHONE[®]

Maximum meter funds for E700 meter: \$1000

Maximum meter funds for E702 meter: \$100

Material

Minimum size: 3" x 5" (125 mm x 76.2 mm)

Minimum thickness: 0.007" (0.18 mm)

Maximum thickness: 5/16" (8 mm)

Important: For best results, make sure your material (envelopes, postcards) conforms fully to these specifications. If thicker than the maximum, use a self-adhesive postage tape sheet.

FCC Notice Stand-alone Operation -Class B

Note: This equipment has been tested and found to comply with the limits for a Class B digital device, pursuant to part 15 of the FCC rules. These limits are designed to provide reasonable protection against interference in a residential installation. This equipment generates, uses, and can radiate radio frequency energy and, if not installed and used in accordance with the instruction manual, may cause interference to radio communication. However, there is no guarantee that interference will not occur in a particular installation. If this equipment causes interference to radio or television reception, which can be determined by turning the equipment off and on, the user is encouraged to try to correct the interference by one or more of the following measures.

- Reorient or relocate the receiving antenna.
- Increase the separation between the equipment and receiver.
- Connect the equipment into an outlet on a circuit different from that to which the receiver is connected.
- Consult the dealer or an experienced radio/TV technician for help.

FCC Compliance of Postage By Phone® Modem

This equipment complies with Part 68 of FCC rules. On the label, located on the inside cover, you will find the FCC registration number and the ringer equivalence number (REN) for the Postage by Phone Auto Meter Resetting Modem. If requested, this information must be provided to the telephone company. This equipment is designed to connect to a 2 wire local switch access loop start (facility Interface Code 02LS2) with a standard RJ11C interface. This modem device must not be used with party lines or coin (pay telephone) lines.

The REN is used to determine the quantity of devices which may be connected to the telephone line. Excessive RENs on the telephone line may result in the devices not ringing in response to an incoming call. In most, but not all areas, the sum of the RENs should not exceed five (5). To be certain of the number of devices that may be connected to the line contact the telephone company to determine the maximum REN for your calling area.

If this Modem causes harm to the telephone network, the telephone company may discontinue your service temporarily. If possible, they will notify you in advance. If advance notice is not practical, you will be notified as soon as possible. You will be advised of your right to register a complaint with the FCC.

The telephone company may make changes to its facilities, equipment operations or procedures which could affect the operation of this equipment. If this happens, the telephone company will provide advance notice in order for you to make the necessary modifications in order to maintain uninterrupted service.

Industry Canada Compliance

“NOTICE: The Industry Canada label identifies certified equipment. This certification means that the equipment meets telecommunications network protective, operational and safety requirements as prescribed in the appropriate Terminal Equipment Technical Requirements document(s). The Department does not guarantee the equipment will operate to the user’s satisfaction.

Before installing this equipment, users should ensure that it is permissible to be connected to facilities of the local telecommunications company. The equipment must also be installed using an acceptable method of connection. The customer should be aware that compliance with the above conditions may not prevent degradation of services in some situations.

Repairs to certified equipment should be coordinated by a representative designated by the supplier. Any repairs or alterations made by the user to this equipment, or equipment malfunctions, may give the telecommunications company cause to request the user to disconnect the equipment.

Users should ensure for their own protection that the electrical ground connections of the power utility, telephone lines and internal metallic water pipe system, if present, are connected together. This precaution may be particularly important in rural areas.

Caution

Users should not attempt to make such connections themselves, but should contact the appropriate electric inspection authority, or electrician, as appropriate.”

“NOTICE: The Ringer Equivalence Number (REN) assigned to each terminal device provides an indication of the maximum number of terminals allowed to be connected to a telephone interface. The termination on an interface may consist of any combination of devices subject only to the requirement that the sum of the Ringer Equivalence Numbers of all the devices does not exceed 5.” REN=0.4B for this product.

E700/E702 METERS

Index

- A**
- Account
 - Balance 19, 40
 - Account Balance
 - Low 40
 - Account Number
 - Change 28, 41
 - Activating Meter 28
 - Ad
 - Buying Custom 43
 - Key 6
 - Not Found 41
 - Printing On/Off 15
 - Samples 15
 - Selecting 15
 - Ad Card
 - Installing 16
 - Add Postage 17-18
 - Adding
 - Ink 32-37
 - Postage 18
 - Adjusting
 - Display 26
 - Advance
 - Date Key 6, 10, 24
 - Postage Payment 8
 - Advertisement see Ad
 - Amount
 - Postage 11, 12
 - Setting the Meter 12
 - Analog Phone Line 17
 - Art
 - Printing 15
 - Artwork
 - Install 16
 - Auto Dating 25
 - Available Postage 11
- B**
- Balance
 - Account 19
 - Batteries
 - Replace 42
 - Replacing 43
 - Battery Size 43
 - Blank Display
 - Sleep Mode 7, 46
 - Busy signal 40
 - Buying Postage 17
- C**
- Cannot Read Card 40
 - Change
 - Batteries 42, 43-44
 - Date 10, 24
 - Lock Code 21
 - Time 25
 - Change Date 24
 - Change Postage
 - Account #
 - Prompt 28
 - Change Setup 6, 23
 - Changing
 - Data Center Phone
 - Number 27
 - Setup 23
 - Chart
 - Using Postage Rate 11
 - Check
 - Account Balance 19
 - Date 10
 - Postage Available 11
 - Check Account 41
 - Choosing Ads 15
 - Class
 - Postage Rate 11
 - Clear Key 6
 - Clearing Errors 39
 - Clog
 - Printer Nozzles 32, 39
 - Code
 - Incorrect 40
 - Lock 20-22
 - Connecting Power 7
 - Connection Lost 40
 - Contrast
 - Adjusting 6, 26
 - Level 26
 - Custom Ads
 - Buying 43
 - Installing 16
- D**
- Data Center
 - Cannot Reach 40
 - Changing Phone # 27
 - Connection 40
 - Phone Busy 40
 - Phone # 27, 40
 - POSTAGE BY PHONE® 17
 - Date
 - Advancing 6, 10
 - Changing 6, 10, 24
 - Checking 10
 - Format 24
 - Setting 24
 - Turn On/Off 6, 14
 - Deposit Amount 19
 - Dial Tone 41
 - Discounts
 - Fractional Postage 12
 - Setting 12
 - Display
 - Adjust Contrast 26
 - Error 39
 - Not Ready 40
- E**
- Enable Lock 20
 - Energy Star 46
 - Enter Key 6
 - Envelope
 - Remove 42
 - Specifications 47
 - Error Messages 39-42
 - Errors
 - Clearing 39
- F**
- Features
 - meter 6

E700/E702 METERS

Format					
Date	24				
Time	25				
Fractional Postage	12				
Functions					
Keypad	6				
Funds					
Available	6, 11, 19				
Insufficient	41				
Locking	20-22				
Unavailable	40, 41				
Used	6, 11				
Verify	11				
Funds/Pieces Key	6, 11				
G					
Guidelines					
USPS	4				
H					
High Value					
Error	41				
Setting	12				
I					
Ink					
Adding	32				
Low	39				
Needs Refill	33				
Ink Cartridge					
Precaution	2, 7				
Replacing	32-37				
Inspection Due					
Refill Required	40				
Inspection Required					
Prompt	41				
Refill	4, 28				
Installing					
Ad Card	16				
Additional Ads	16, 43				
Custom Ads	16, 43				
Ink	32-37				
Meter	28				
Insufficient Funds	41				
J					
Jammed					
Printer	41				
K					
Keypad Functions	6				
Keys					
Ads	6				
Advance Date	6				
Clear	6				
Description	6				
Funds/Pieces	6				
Lock	6				
No	6				
Refill	6				
Setup	6				
Yes/Enter	6				
L					
Limit					
Postage Value	41				
Refill	41				
Line					
No Dial Tone	17, 41				
Lock					
Code	20				
Code Incorrect	40				
Code Unknown	22, 40				
Enable/Disable	6, 21				
Key	6				
Turning On/Off	20, 21				
Locking					
Funds	22				
Meter	20-22				
Lost					
Connection	40				
Low					
Account Balance	40				
Ink	41				
M					
Mailpiece					
Meter Guidelines	47				
Sizes	47				
Maintaining Meter	32				
Maintenance					
Setup	6				
Maximum					
Imprint Amount	47				
Postage Amount	41, 47				
Postage Setting	47				
Size	47				
Thickness	47				
Maximum Funds	47				
Message					
Error	39-42				
Meter					
Activating	28				
Guidelines	4				
Installing	28				
Locked	20-22				
Locking/Unlocking	22				
Maintaining	32				
Parts of	5				
Setting Amount	12				
Meter Stamp					
Incomplete	39				
Parts of	5				
Printing	12				
Sample	5				
Minimum					
Mailpiece Size	47				
Thickness	47				
Modem					
Communications	17, 27				
Internal	17				
Refill	18				
Moving Meter	4				
N					
No Ad Found	41				
No Dial Tone	41				
No Key	6				
Nozzles					
Clogged	32, 39				
O					
Options					
Changing	6, 23				
Setup	23				
Ordering Supplies	43				
P					
Packages					
Adding Postage	13				
Payment Address	17				
Phone					
Busy	40				
Line	17				
No Dial Tone	41				
Number	6, 27, 40				

Pieces Printed	6	Ready		T	
Postage		Not Displaying	40	Tape Sheet	
Adding	18	Receipt Printing	18	Printing	13, 39
Advance Payment	17	Refill		Test Print	33
Check Available	11	Failed	41, 42	Thick Envelopes	
Discounts	12	Inspection	4, 40, 41	Postage	13
Fund Options	6	Key	6, 18	Using Tape Sheets	13
Inspection	4	Limit	41, 47	Thickness	
Prepaid	17	Problem	41, 42	Maximum Envelope	47
Printing	12	Process	17	Minimum Envelope	47
Refilling	17, 18	Receipt	18	Time	
Setting Fractions	12	Required	4, 41	Change	6, 25
Postage Amount		Refill Required		Format	25
Determining	11	Inspection Due	41	Setting	25
POSTAGE BY PHONE®		Refilling		Turn Date On/Off	14
Payment Address	17	Ink Cartridge	2, 34	U	
Phone Number	27	Postage	17, 18	United States Postal	
Problems	40	Relocating Meter	4, 7	Service Guidelines	4
Postage Rate Chart	11	Remove Envelope	41, 42	Unlocking Meter	22
Postage Setting		Replacing		V	
Maximum	47	Batteries	42, 43	Value	
Postage Value		Ink Cartridge	34	Setting Postage	12
Exceeds Limit	41	Reporting Postage	4	Vault	
Power		Resolving Problems	39	Meter	47
Connecting	7	Rules		Verify	
Problems	39	USPS	4	Funds Available	11
Specifications	47	S		W	
Turn On/Off	7	Selecting Ads	15	Weight	
Prepaid Postage	17	Setting		Postage Rate	11
Printer		Date	10, 24	Y	
Clogged	32	Decimal Value	12	Yes	
Jammed	41	Fractional Value	12	Key	6
Refreshing Nozzles	32	High Value	12	Z	
Printer Test	6, 33	Postage Amount	12	ZIP Code	
Printing		Postage Value	12	Cannot Find	40
Ads	15	Time	25	Not Installed	40
Date	10, 14	Setup		Rules	4
Meter Stamp	12	Key	6		
Meter Tape	13	Options	23		
Postage	12	Size			
Problems	39	Maximum Envelope	47		
Problem		Minimum Envelope	47		
Inspection	41	Sleep Mode	7, 46		
Printing	39	Slogans			
Refill	41, 42	Printing	15		
Problems		Specifications			
Resolving	39	Equipment	47		
R		Mailpiece	47		
Rate Chart	11				

E700/E702 METERS

E700/E702 METERS